

10TH CONFERENCE OF THE EUROPEAN SOCIOLOGICAL ASSOCIATION

esa 2011

SOCIAL RELATIONS IN TURBULENT TIMES

UNIVERSITÉ
DE GENÈVE

soziologie

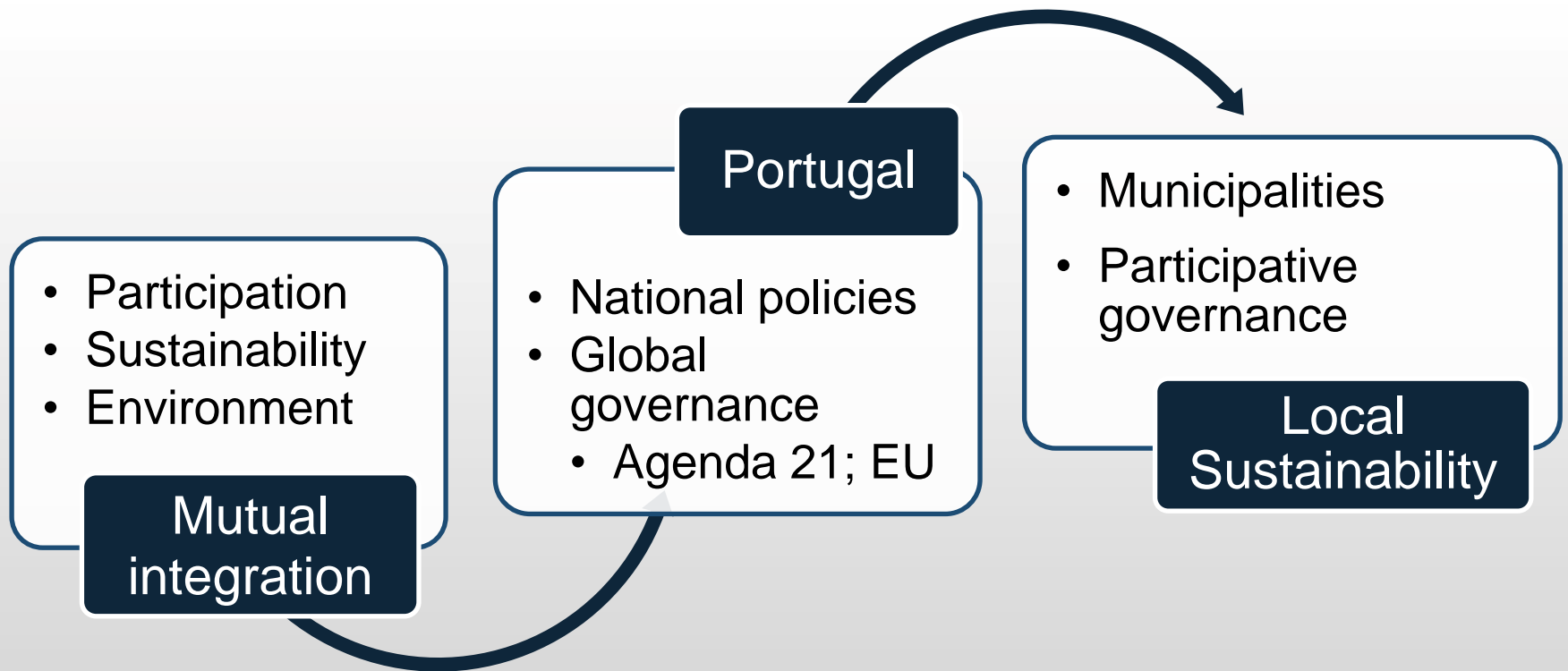
7th to 10th September 2011

Geneva
Switzerland

Local Governance and Sustainability in Portuguese Municipalities

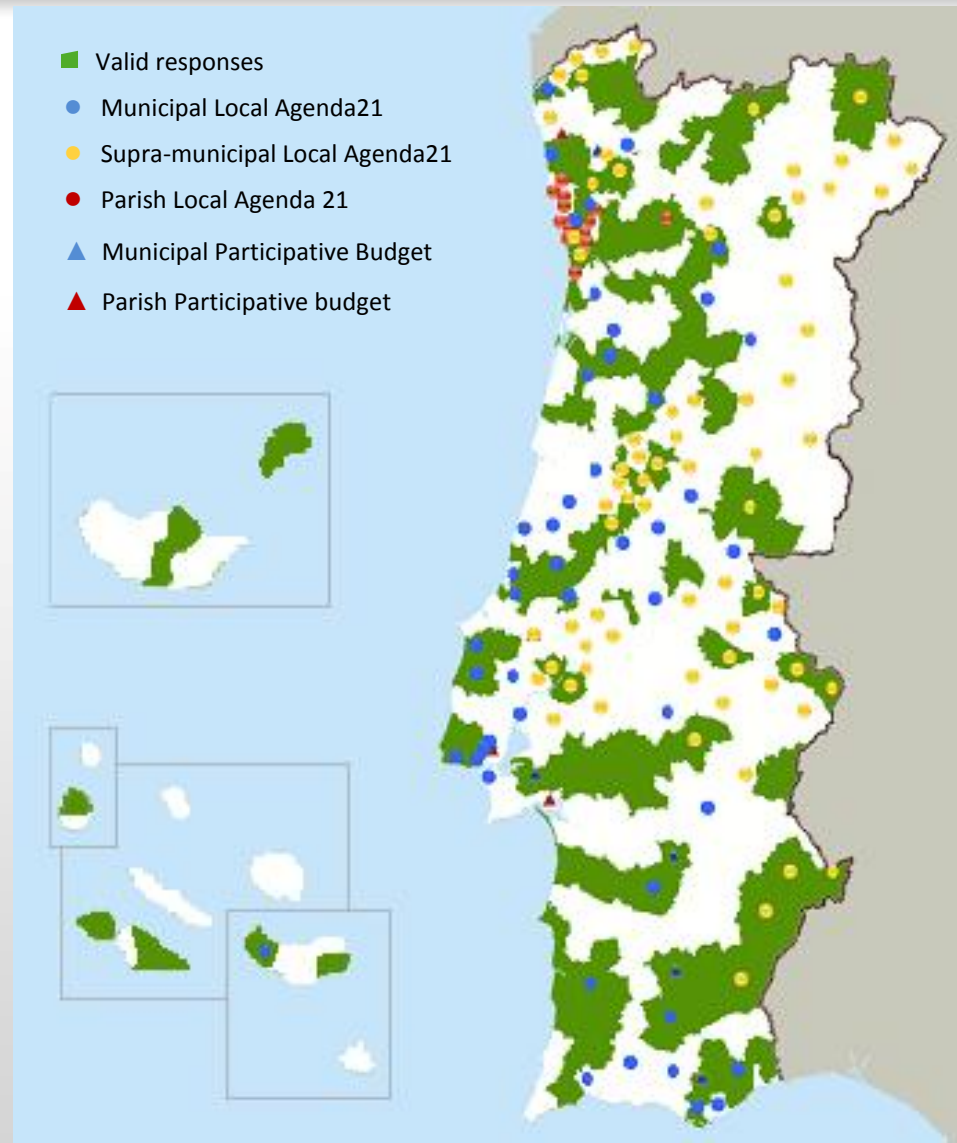
João Guerra

Social Sciences Institute of University of Lisbon

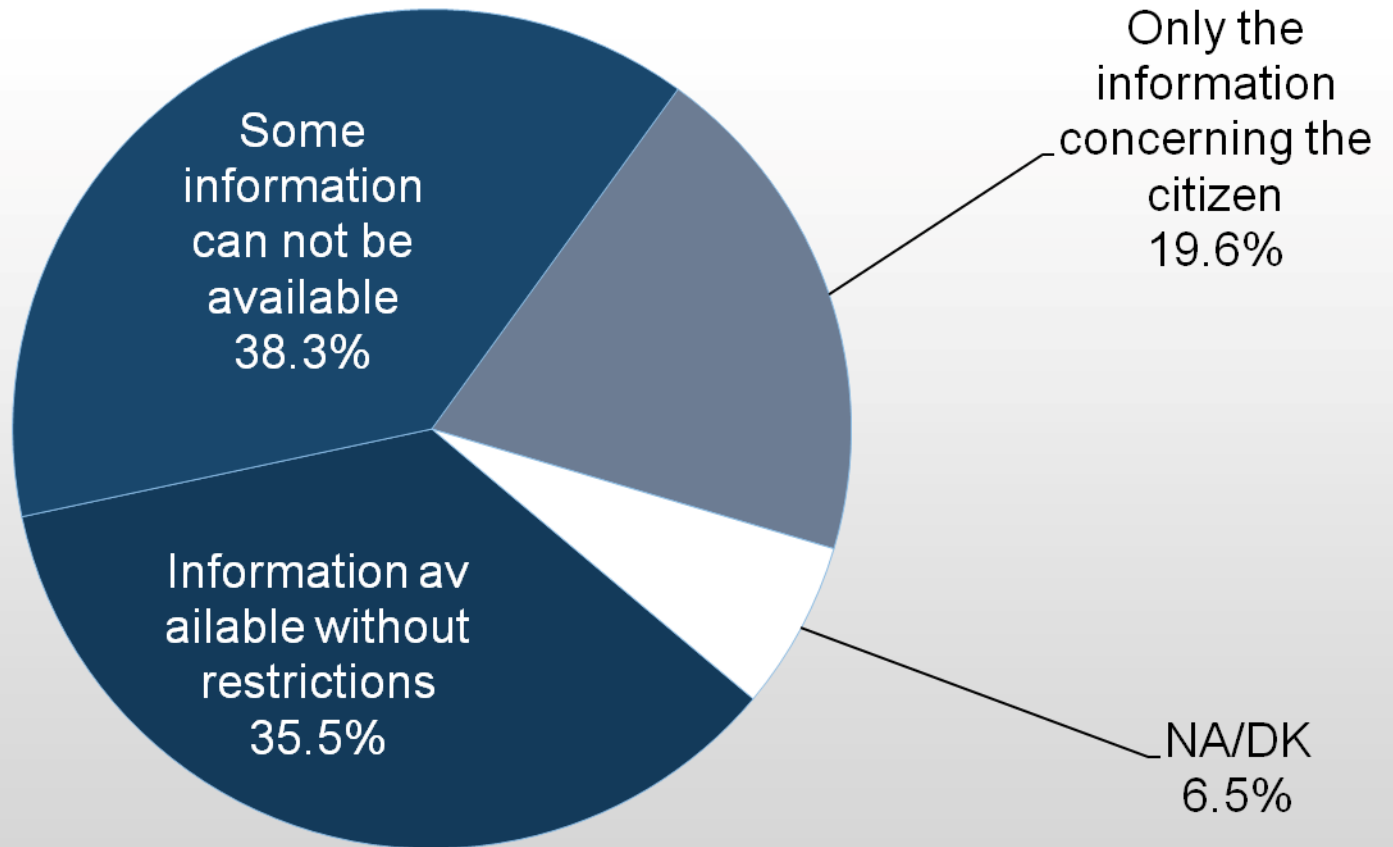




Valid responses and located participative initiatives in Portuguese territory



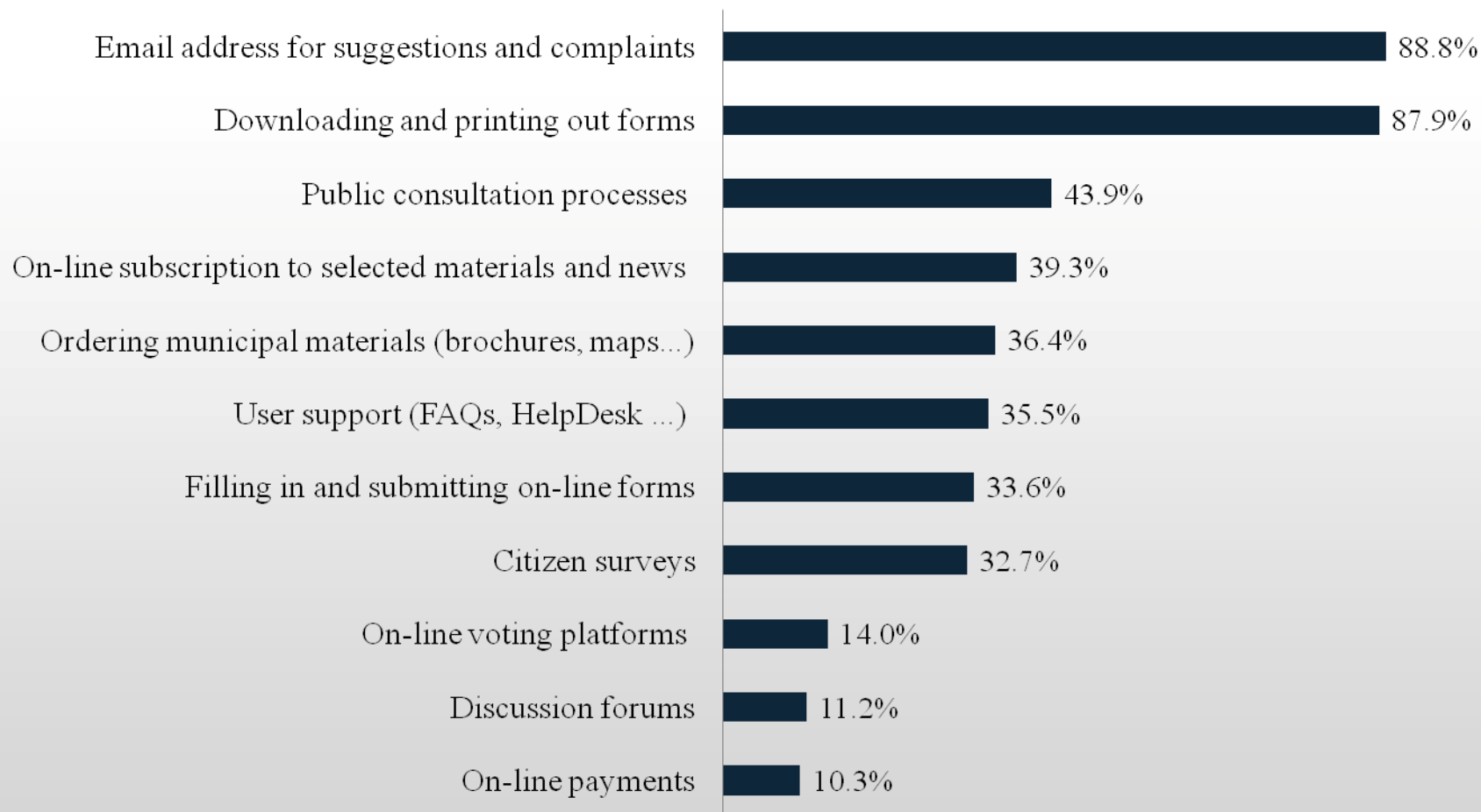
Providing Information to Municipal citizens



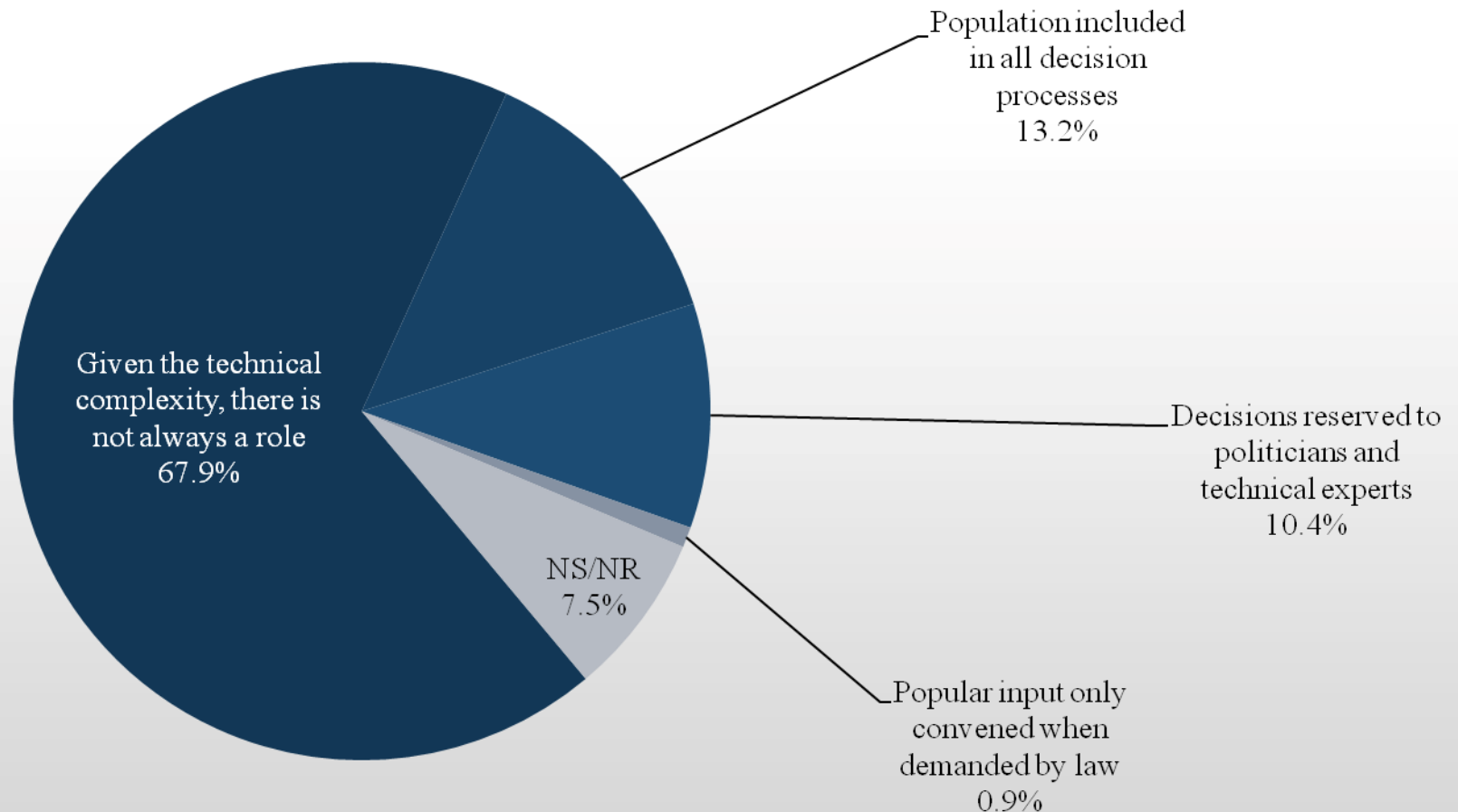
Information available and means of provision to municipal citizens

	<i>Positive response</i>	<i>Municipal facilities</i>	<i>Spread by mail</i>	<i>Available on-line</i>	<i>Municipal bulletin</i>	<i>Media</i>	<i>Official Gazette</i>	<i>Other</i>
Regulations	99.10%	73.80%	4.70%	67.30%	1.90%	3.70%	0.00%	0.90%
Tariffs and Charges	98.10%	69.20%	6.50%	67.30%	1.90%	0.90%	0.00%	0.00%
Minutes of Assembly / Council Meetings	97.20%	66.40%	3.70%	75.70%	2.80%	0.00%	0.00%	0.00%
Assembly / Council Deliberations	97.20%	65.40%	5.60%	74.80%	4.70%	0.90%	0.00%	0.00%
Urban Development Plans	96.30%	73.80%	1.90%	63.60%	0.90%	0.90%	0.90%	0.00%
Municipal Regulations	96.30%	61.70%	0.90%	86.90%	1.90%	0.90%	0.00%	0.00%
Municipal Budget	94.40%	62.60%	2.80%	67.30%	1.90%	1.90%	0.00%	0.00%
Public Tenders	92.50%	72.90%	1.90%	52.30%	0.00%	4.70%	3.70%	0.00%
Urbanisation Projects Approved	91.60%	86.00%	3.70%	17.80%	0.90%	0.00%	0.00%	0.00%
Municipal Council Sessions Agenda	86.90%	65.40%	1.90%	41.10%	0.90%	0.00%	0.00%	1.90%
Assembly / Council Working Orders	86.00%	65.40%	0.90%	35.50%	0.00%	1.90%	0.00%	0.00%
Results of Public Discussion	85.00%	65.40%	6.50%	47.70%	1.90%	0.00%	0.00%	0.90%
Urbanisation Projects under approval	82.20%	77.60%	0.90%	12.10%	0.00%	0.00%	0.00%	0.00%
Municipal Assembly Motions	80.40%	64.50%	2.80%	37.40%	0.90%	2.80%	0.00%	0.00%
Environmental Monitoring	73.80%	55.10%	3.70%	33.60%	0.90%	3.70%	0.00%	1.90%

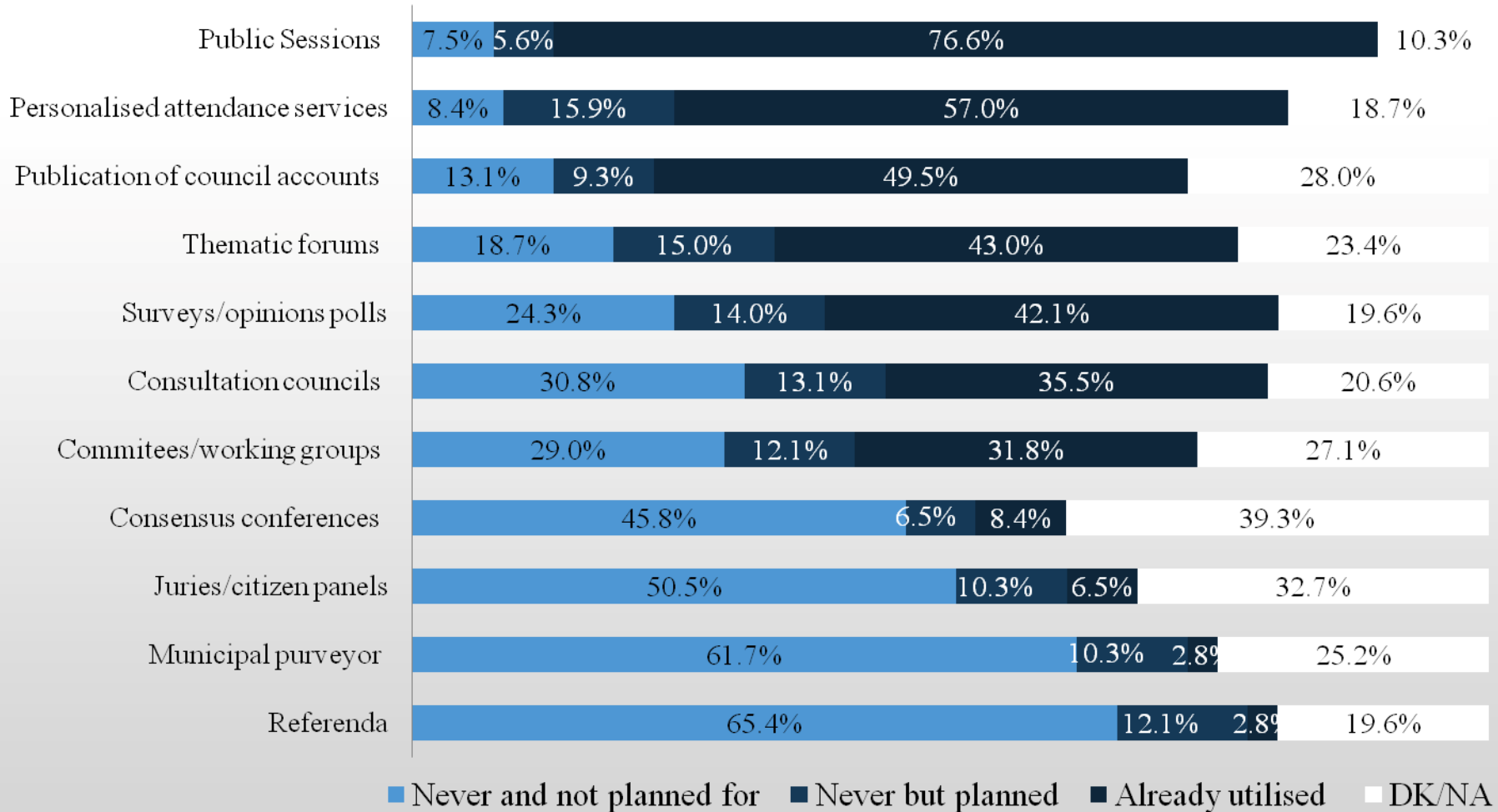
Online municipal services available



Role reserved for popular input into decision making processes



Methods and forms of citizen involvement

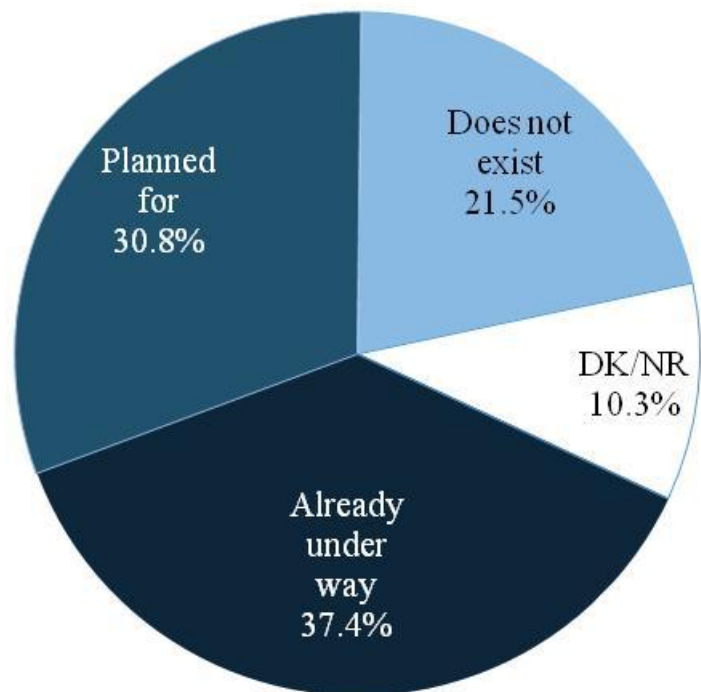


Themes analysed / worked by each participative instrument

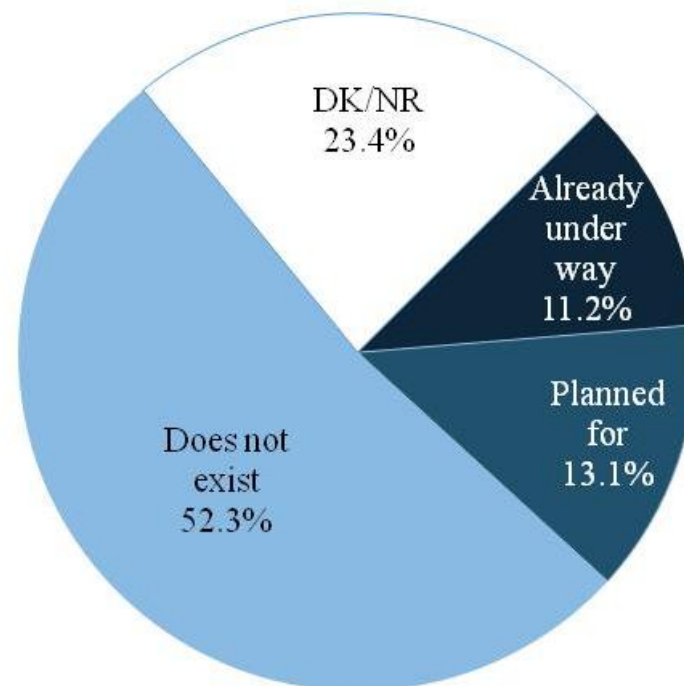
	Referenda	Public sessions	Surveys / Polls	Committees / Work groups	Thematic forums	Juries / Citizen panels	Consultation councils	Consensus conferences	Total
A21L and Local Sustainable Development	1	38	27	16	32	7	16	3	140
Satisfaction with municipal services	1	23	22	14	13	1	10	3	87
Planning and management	1	24	16	9	18	1	9		78
Environmental education / Education		13	9	6	5	1	12		46
Built heritage projects	1	11	6	9	4	2	4	3	40
Civil protection and safety		9	5	5	5	1	10		35
Social projects and housing	1	9	6	3	7		6		32
Youth, culture and sport		6	3	3	4	1	4	1	22
Other themes	2	6	4	2	5	1	2		22
Budget (including participated)		5	4	3	4		2	2	20
Economic activities	1	6	3	1	5		1		17
Healthcare and healthcare services		3	3	2	2		1		11

Instruments of local governance according to phase of development

Local Agenda 21



Participative Budget

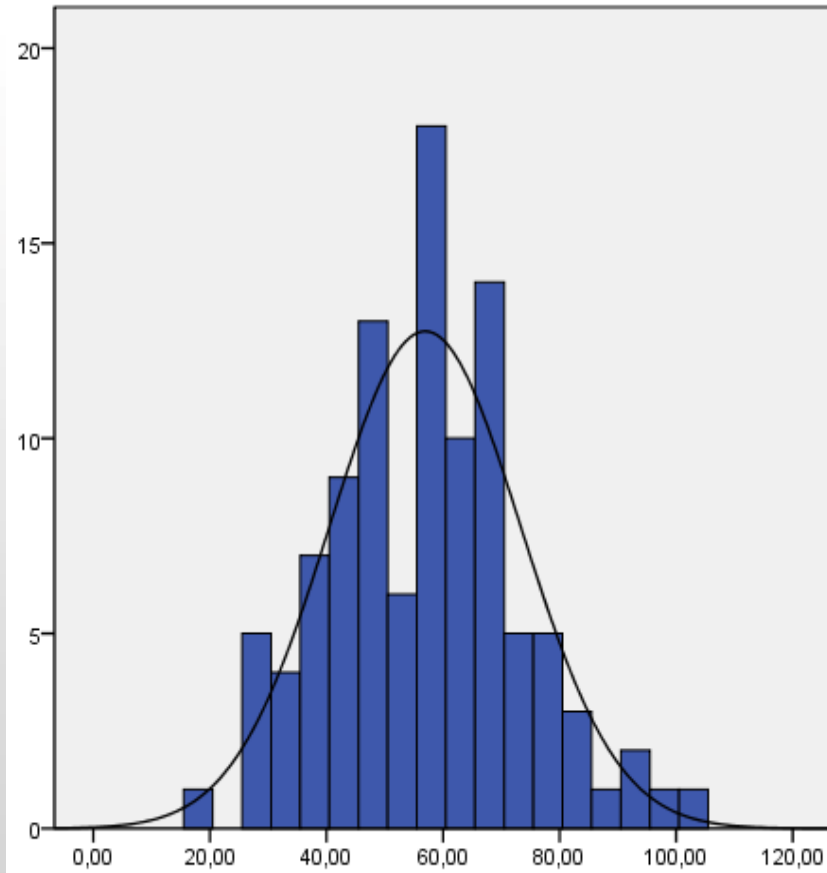


Annual expansion:

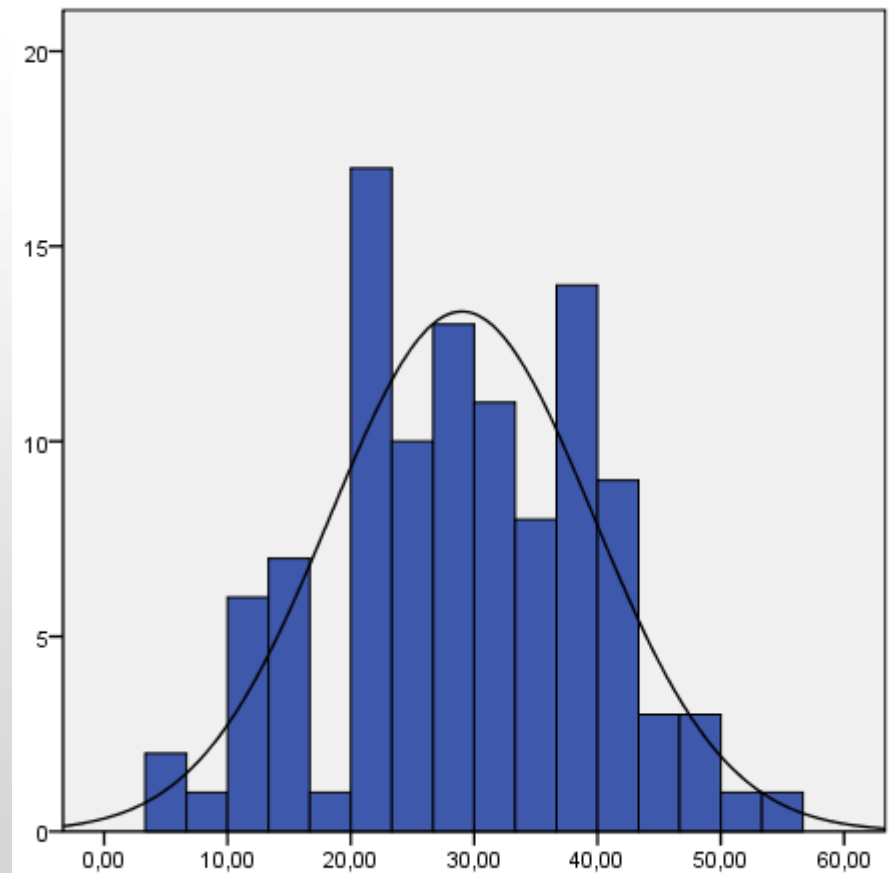
44,3% (1996-2009)

230,0% (2005/2009)

Information and Services Index



Participation Promotion Index



Municipal Development Summary Index



Descriptive statistics (influence of LA21 and PBs on information, participation and development indices)

	LA21 and PB initiatives	Average	Stan. Dev.	N
Information and services available index	None	54.03	17.204	57
	Inter-municipal	56.54	15.277	26
	Municipal	64.21	13.052	24
	Total	56.92	16.276	107
Participation promotion index	None	28.00	10.884	57
	Inter-municipal	29.27	10.114	26
	Municipal	31.10	10.882	24
	Total	29.00	10.675	107
Municipal development summary index	None	59.63	15.102	57
	Inter-municipal	55.75	20.487	26
	Municipal	69.91	20.495	24
	Total	60.99	18.341	107

Multivariate Variance Analysis results

Such differences hold repercussions for municipal performances combining the three dependent variables

- Information and Services Index;
- Participation Promotion Index,
- Municipal Development Summary Index

$F(6, 204) = 2.49, p = 0.024$; Wilks' Lambda = 0.87; ETA2 partial = 0.068

Considered separately, the only statistically significant difference (utilising an adjusted level of significance – the Bonferroni correction – of 0.017) was attained by the Municipal Development Summary Index

$F(2, 104) = 4.314, p = 0.016$, ETA2 partial = 0.019

Influence of existing participation initiatives on MDSI

